



GAT MONTHLY MEMBERSHIP PROGRESS REPORT

Results as of: 2/28/2022

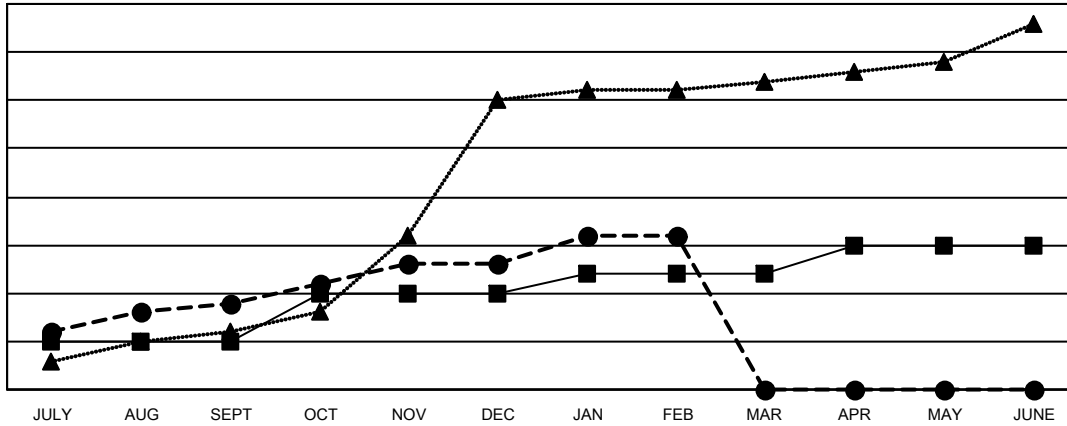
Multiple District 3231

LOCATION: INDIA

| Clubs | | | |
|-----------------------|---------------|-----------|---------------|
| RESULTS FOR 2021-2022 | | | |
| QUARTER | NEW CLUB GOAL | NEW CLUBS | DROPPED CLUBS |
| JULY/AUG/SEPT | 5 | 9 | 4 |
| OCT/NOV/DEC | 5 | 4 | 2 |
| JAN/FEB/MAR | 2 | 3 | 0 |
| APR/MAY/JUNE | 3 | 0 | 0 |

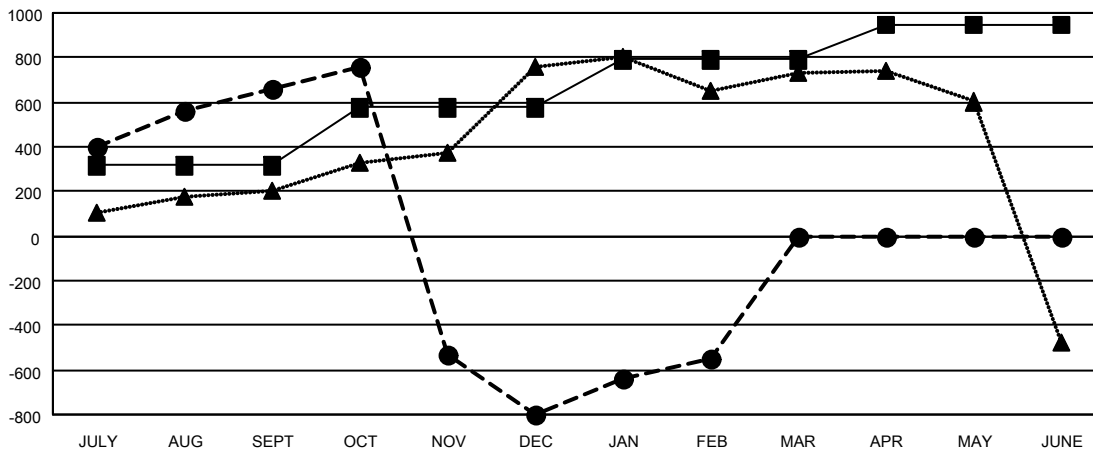
| Members | | | |
|-----------------------|------------------------|----------------------|--|
| RESULTS FOR 2021-2022 | | | |
| QUARTER | MEMBER GROWTH NET GOAL | MEMBER GROWTH ACTUAL | DROPPED MEMBERS ACTUAL (including transfers) |
| JULY/AUG/SEPT | 315 | 905 | 181 |
| OCT/NOV/DEC | 260 | 318 | 1,750 |
| JAN/FEB/MAR | 215 | 325 | 53 |
| APR/MAY/JUNE | 160 | 0 | 0 |

GOALS AND ACTUAL NEW CLUBS CUMULATIVE



- CURRENT YEAR GOALS FOR NEW CLUBS
- CURRENT YEAR ACTUAL NEW CLUBS
- ▲- LAST YEAR ACTUAL NEW CLUBS

GOALS AND ACTUAL MEMBERS CUMULATIVE



- MEMBER GROWTH NET GOAL
- MEMBER GROWTH ACTUAL
- ▲- LAST YEAR MEMBERSHIP ACTUAL

| | | |
|------------------------|---|--|
| DROPPED CLUBS: 6 | 160 CLUBS OF 318 ADDED 1 OR MORE NEW MEMBERS | GENDER DISTRIBUTION |
| DROPPED MEMBERS | CLICK HERE FOR CUMULATIVE MEMBERSHIP DATA | MALE 6,670 (60.60%) |
| DECEASED 33 | | FEMALE 4,336 (39.40%) |
| CLUB CANCELLED 1,368 | | NON BINARY 0 (0.00%) |
| OTHER 583 | | PREFER NOT TO ANSWER 0 (0.00%) |
| TOTAL 1,984 | | TOTAL FAMILY UNIT MEMBERS 6,365 |
| | | FAMILY MEMBERS PAYING HALF DUES 3,465 |